

Installing Rcmdr

Start R



R Console (64-bit)

File Edit Misc Packages Windows Help

R version 3.4.0 (2017-04-21) -- "You Stupid Darkness"
Copyright (C) 2017 The R Foundation for Statistical Computing
Platform: x86_64-w64-mingw32/x64 (64-bit)

R is free software and comes with ABSOLUTELY NO WARRANTY.
You are welcome to redistribute it under certain conditions.
Type 'license()' or 'licence()' for distribution details.

Natural language support but running in an English locale

R is a collaborative project with many contributors.
Type 'contributors()' for more information and
'citation()' on how to cite R or R packages in publications.

Type 'demo()' for some demos, 'help()' for on-line help, or
'help.start()' for an HTML browser interface to help.
Type 'q()' to quit R.

> `install.packages("Rcmdr")`|

enter



R Console (64-bit)

File Edit Misc Packages Windows Help

R version 3.4.0 (2017-04-21) -- "You Stupid Darkness"
Copyright (C) 2017 The R Foundation for Statistical Computing
Platform: x86_64-w64-mingw32/x64 (64-bit)

R is free software and comes with ABSOLUTELY NO WARRANTY.
You are welcome to redistribute it under certain conditions.
Type 'license()' or 'licence()' for distribution details.

Natural language support but running in an English locale.

R is a collaborative project with many contributors.
Type 'contributors()' for more information and
'citation()' on how to cite R or R packages in publications.

Type 'demo()' for some demos, 'help()' for on-line help, or
'help.start()' for an HTML browser interface to help.
Type 'q()' to quit R.

```
> install.packages("Rcmdr")
```

--- Please select a CRAN mirror for use in this session.

Taskbar icons: Windows, File Explorer, RStudio, Chrome, R

Secure CRAN mirrors

- 0-Cloud [https]
- Algeria [https]
- Australia (Canberra) [https]
- Australia (Melbourne) [https]
- Australia (Perth) [https]
- Austria [https]
- Belgium (Ghent) [https]
- Brazil (RJ) [https]
- Brazil (SP 1) [https]
- Bulgaria [https]
- Chile 1 [https]
- China (Lanzhou) [https]
- Colombia (Cali) [https]
- Czech Republic [https]
- Denmark [https]
- Estonia [https]
- France (Lyon 1) [https]
- France (Lyon 2) [https]
- France (Marseille) [https]
- France (Montpellier) [https]
- France (Paris 2) [https]
- Germany (Göttingen) [https]
- Germany (Münster) [https]
- Iceland [https]
- Indonesia (Jakarta) [https]
- Ireland [https]
- Italy (Padua) [https]

Buttons: OK, Cancel

Screenshot Added
A screenshot was added to your Dropbox.

OK

```
R Console (64-bit)
File Edit Misc Packages Windows Help

package 'htmltools' successfully unpacked and MD5 sums checked
package 'base64enc' successfully unpacked and MD5 sums checked
package 'cellranger' successfully unpacked and MD5 sums checked
package 'Rcpp' successfully unpacked and MD5 sums checked
package 'tibble' successfully unpacked and MD5 sums checked
package 'lme4' successfully unpacked and MD5 sums checked
package 'SparseM' successfully unpacked and MD5 sums checked
package 'MatrixModels' successfully unpacked and MD5 sums checked
package 'sandwich' successfully unpacked and MD5 sums checked
package 'colorspace' successfully unpacked and MD5 sums checked
package 'Hmisc' successfully unpacked and MD5 sums checked
package 'e1071' successfully unpacked and MD5 sums checked
package 'readxl' successfully unpacked and MD5 sums checked
package 'pbkrtest' successfully unpacked and MD5 sums checked
package 'quantreg' successfully unpacked and MD5 sums checked
package 'RcmdrMisc' successfully unpacked and MD5 sums checked
package 'car' successfully unpacked and MD5 sums checked
package 'tcltk2' successfully unpacked and MD5 sums checked
package 'abind' successfully unpacked and MD5 sums checked
package 'relimp' successfully unpacked and MD5 sums checked
package 'Rcmdr' successfully unpacked and MD5 sums checked

The downloaded binary packages are in
  C:\Users\parlar\AppData\Local\Temp\RtmpKku5x1\downloaded_packages
> |
```

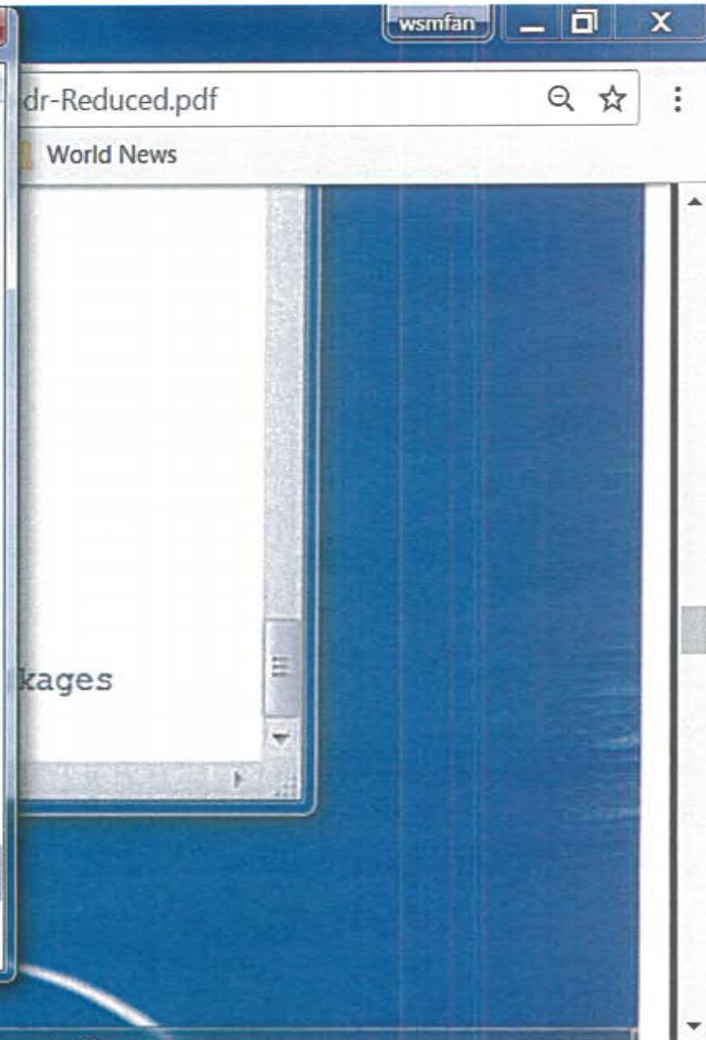
*wait
until
finished*



```
R Console (64-bit)
File Edit Misc Packages Windows Help

package 'htmltools' successfully unpacked and MD5 sums checked
package 'base64enc' successfully unpacked and MD5 sums checked
package 'cellranger' successfully unpacked and MD5 sums checked
package 'Rcpp' successfully unpacked and MD5 sums checked
package 'tibble' successfully unpacked and MD5 sums checked
package 'lme4' successfully unpacked and MD5 sums checked
package 'SparseM' successfully unpacked and MD5 sums checked
package 'MatrixModels' successfully unpacked and MD5 sums checked
package 'sandwich' successfully unpacked and MD5 sums checked
package 'colorspace' successfully unpacked and MD5 sums checked
package 'Hmisc' successfully unpacked and MD5 sums checked
package 'e1071' successfully unpacked and MD5 sums checked
package 'readxl' successfully unpacked and MD5 sums checked
package 'pbkrtest' successfully unpacked and MD5 sums checked
package 'quantreg' successfully unpacked and MD5 sums checked
package 'RcmdrMisc' successfully unpacked and MD5 sums checked
package 'car' successfully unpacked and MD5 sums checked
package 'tcltk2' successfully unpacked and MD5 sums checked
package 'abind' successfully unpacked and MD5 sums checked
package 'relimp' successfully unpacked and MD5 sums checked
package 'Rcmdr' successfully unpacked and MD5 sums checked

The downloaded binary packages are in
  C:\Users\parlar\AppData\Local\Temp\RtmpKku5x1\downloaded_packages
> library(Rcmdr)|
```




enter

```
R Console (64-bit)
File Edit Misc Packages Windows Help

package 'base64enc' successfully unpacked and MD5 sums checked
package 'cellranger' successfully unpacked and MD5 sums checked
package 'Rcpp' successfully unpacked and MD5 sums checked
package 'tibble' successfully unpacked and MD5 sums checked
package 'lme4' successfully unpacked and MD5 sums checked
package 'SparseM' successfully unpacked and MD5 sums checked
package 'MatrixModels' successfully unpacked and MD5 sums checked
package 'sandwich' successfully unpacked and MD5 sums checked
package 'colorspace' successfully unpacked and MD5 sums checked
package 'Hmisc' successfully unpacked and MD5 sums checked
package 'e1071' successfully unpacked and MD5 sums checked
package 'readxl' successfully unpacked and MD5 sums checked
package 'pbkrtest' successfully unpacked and MD5 sums checked
package 'quantreg' successfully unpacked and MD5 sums checked
package 'RcmdrMisc' successfully unpacked and MD5 sums checked
package 'car' successfully unpacked and MD5 sums checked
package 'tcltk2' successfully unpacked and MD5 sums checked
package 'abind' successfully unpacked and MD5 sums checked
package 'relimp' successfully unpacked and MD5 sums checked
package 'Rcmdr' successfully unpacked and MD5 sums checked

The downloaded binary packages are in
  C:\Users\parlar\AppData\Local\Temp\RtmpKku5x1\downloaded_packages
> library(Rcmdr)
```

 The following packages used by Rcmdr are missing:
sem, rmarkdown, rgl, nortest, multcomp, lmtest, leaps, effects, aplpack
Without these packages, some features will not be available.
Install these packages?

Yes No

wsmfan

dr-Reduced.pdf

World News

Yes

R Console (64-bit)

File Edit Misc Packages Windows Help

```
package 'base64enc' successfully unpacked and MD5 sums checked
package 'cellranger' successfully unpacked and MD5 sums checked
package 'R'
package 't'
package 'l'
package 's'
package 'M'
package 's'
package 'c'
package 'H'
package 'e'
package 'r'
package 'p'
package 'g'
package 'RcmdrMisc' successfully unpacked and MD5 sums checked
package 'car' successfully unpacked and MD5 sums checked
package 'tcltk2' successfully unpacked and MD5 sums checked
package 'abind' successfully unpacked and MD5 sums checked
package 'relimp' successfully unpacked and MD5 sums checked
package 'Rcmdr' successfully unpacked and MD5 sums checked
```

The downloaded binary packages are in
C:\Users\parlar\AppData\Local\Temp\RtmpKku5x1\downloaded_packages

```
> library(Rcmdr)
```

Install Missing Packages

Install Packages From:

CRAN

Local package directory (must include PACKAGES index file) Specify package directory:

wsmfan

dr-Reduced.pdf

World News

kages

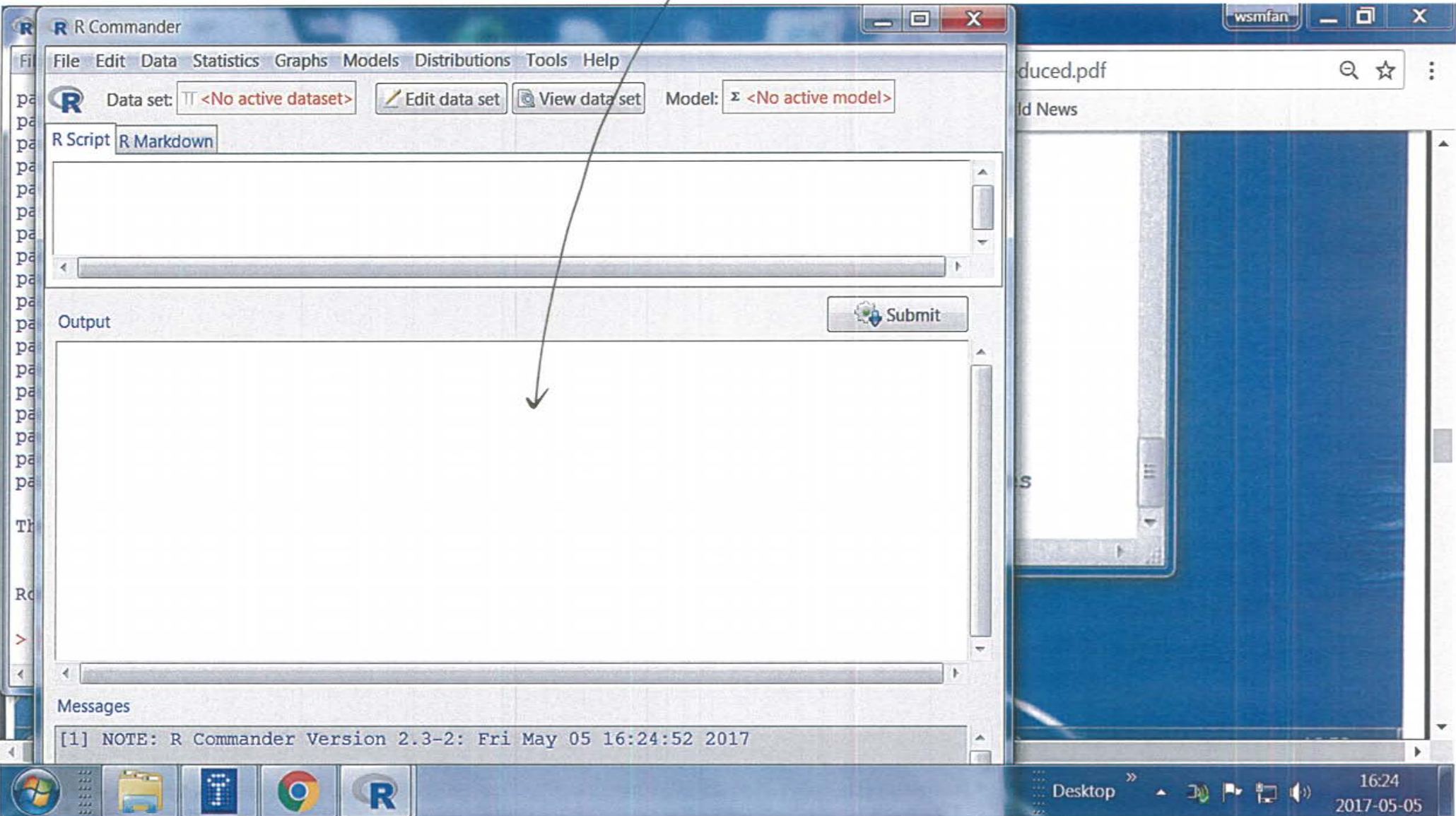
Screenshot Added
A screenshot was added to your Dropbox.

Desktop

16:24
2017-05-05

OK

This is R Commander



R Commander

File Edit Data Statistics Graphs Models Distributions Tools Help

Change working directory... dataset> Edit data set View data set Model: Σ <No active model>

Open script file... Save script... Save script as...

Open R Markdown file... Save R Markdown file... Save R Markdown file as...

Save output... Save output as...

Save R workspace... Save R workspace as...

Exit

- From Commander
- From Commander and R

Submit

Messages

[1] NOTE: R Commander Version 2.3-2: Fri May 05 16:24:52 2017

wsmfan

duced.pdf

ld News

ative model>

Submit

Exit

Desktop 16:25 2017-05-05

R Commander

File Edit Data Statistics Graphs Models Distributions Tools Help

Data set: π <No active dataset> Edit data set View data set Model: Σ <No active model>

R Script R Markdown

Output

Messages

[1] NOTE: R Commander Version 2.3-2: Fri May 05 16:24:52 2017

R

Exit?

OK Cancel

wsmfan

duced.pdf

ld News

active model>

Submit

Screenshot Added

A screenshot was added to your Dropbox.

Desktop 16:25 2017-05-05

OK