

Atkins

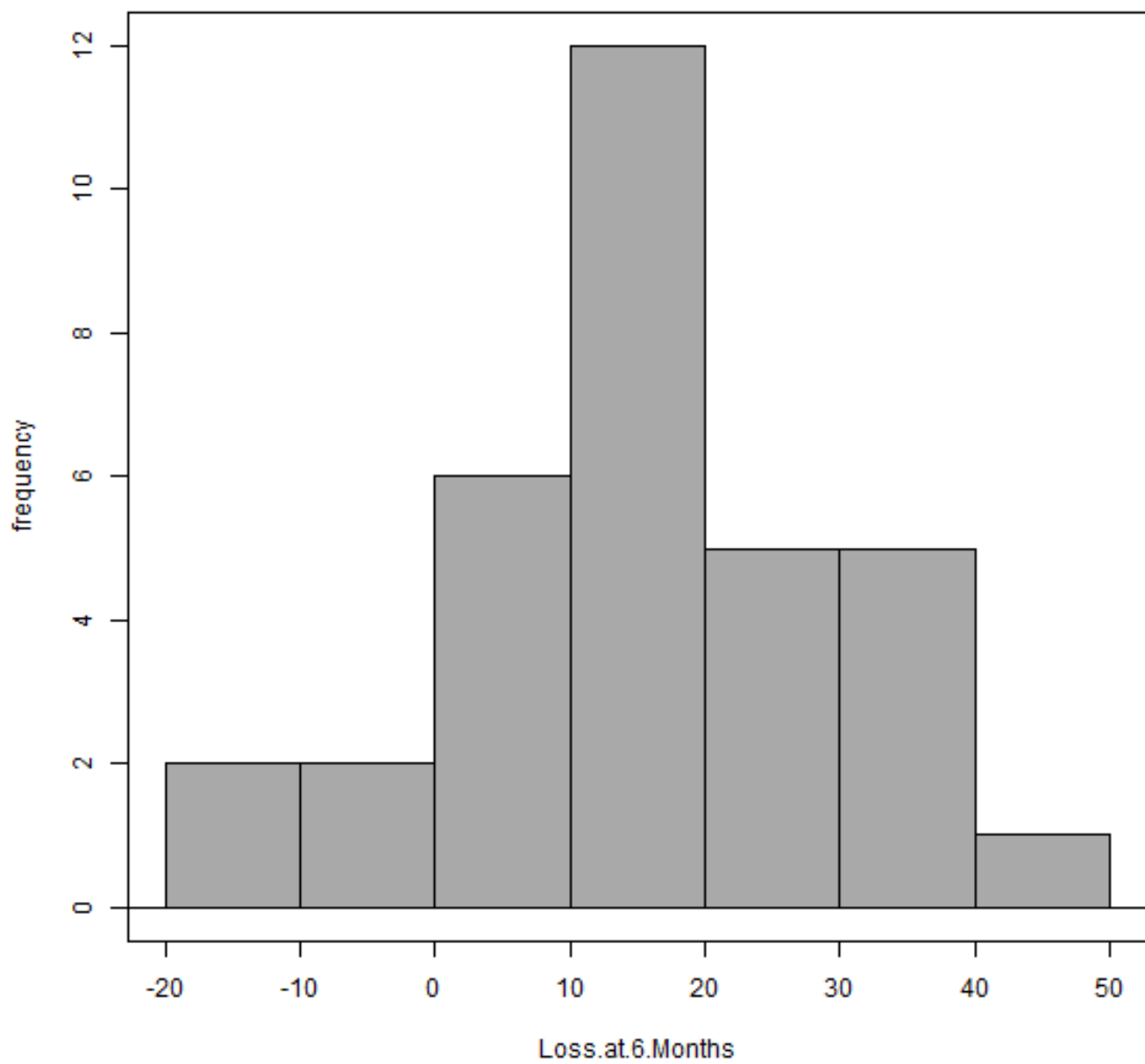
Your Name

2016-05-17

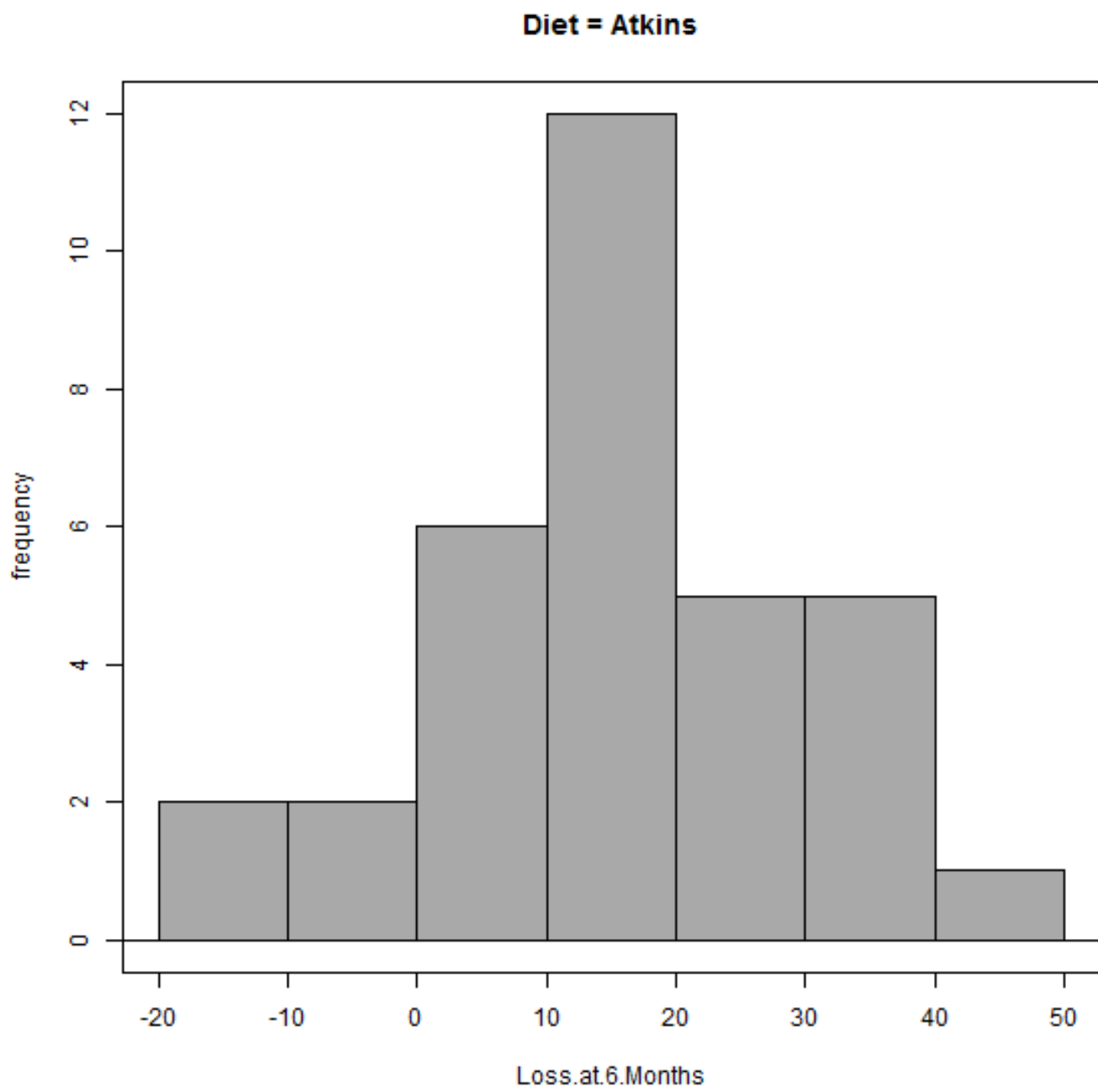
```
> setwd("C:/Users/parlar/Documents/1R/1ZLC/S1/HT")
```

```
> Dataset <-  
+ read.table("C:/Users/parlar/Documents/1R/1ZLC/S1/HT/Atkins-Diet.csv",  
+ header=TRUE, sep=",", na.strings="NA", dec=".", strip.white=TRUE)
```

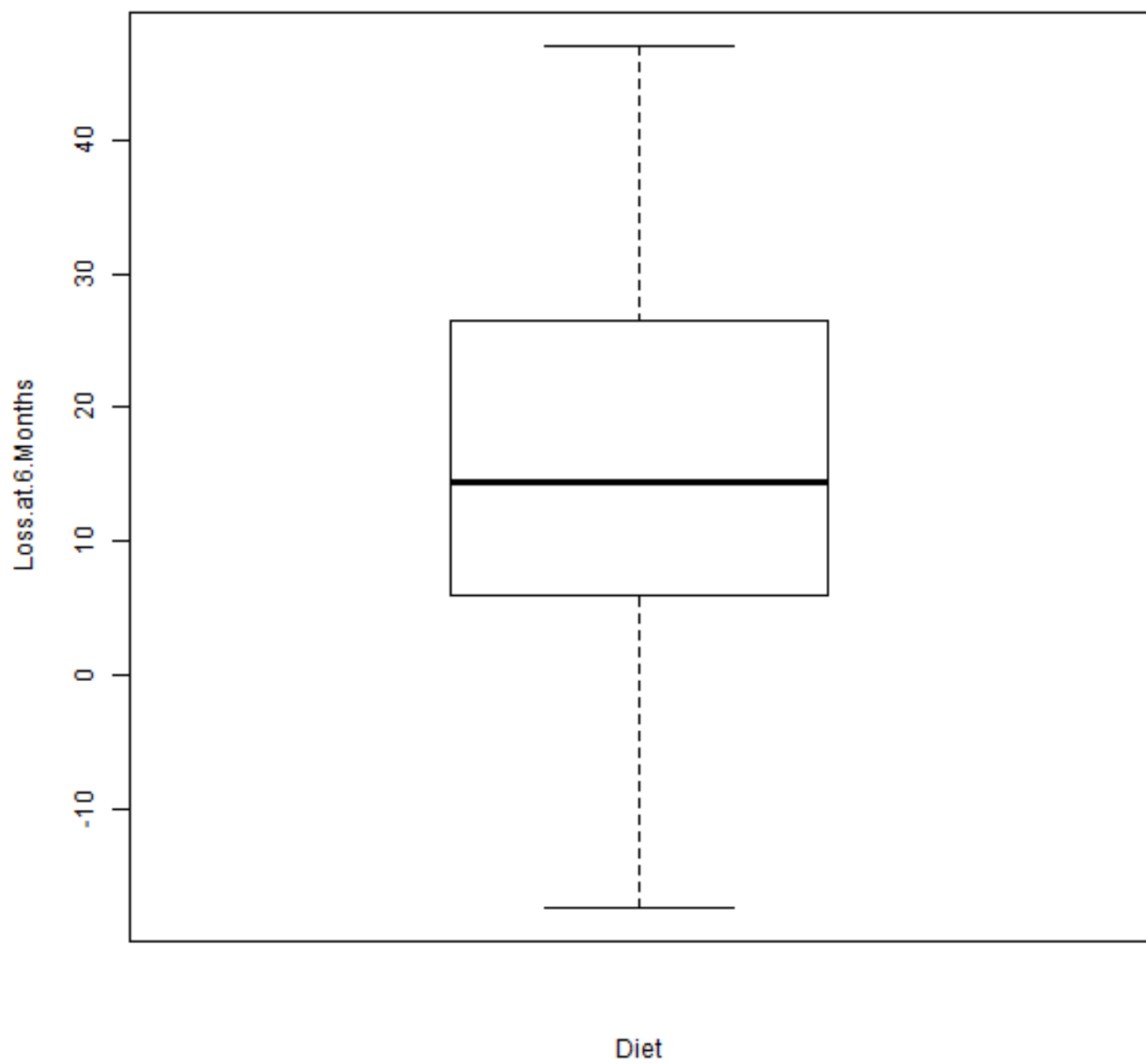
```
> with(Dataset, Hist(Loss.at.6.Months, scale="frequency", breaks="Sturges",  
+ col="darkgray"))
```



```
> with(Dataset, Hist(Loss.at.6.Months, groups=Diet, scale="frequency",  
+ breaks="Sturges", col="darkgray"))
```



```
> Boxplot(Loss.at.6.Months~Diet, data=Dataset, id.method="y")
```



```
> with(Dataset, (t.test(Loss.at.6.Months, alternative='less', mu=20,  
+   conf.level=.95)))
```

One Sample t-test

```
data: Loss.at.6.Months
t = -1.8291, df = 32, p-value = 0.03836
alternative hypothesis: true mean is less than 20
95 percent confidence interval:
  -Inf 19.66181
sample estimates:
mean of x
 15.42424
```

```
> with(Dataset, (t.test(Loss.at.6.Months, alternative='less', mu=10,
+   conf.level=.95)))
```

One Sample t-test

```
data: Loss.at.6.Months
t = 2.1682, df = 32, p-value = 0.9812
alternative hypothesis: true mean is less than 10
95 percent confidence interval:
  -Inf 19.66181
sample estimates:
mean of x
 15.42424
```